



CLAY TARGET MACHINES

XP-SERIES ARM GUARD INSTALLATION GUIDE

MEC PART # 120000605

NOTE: SEE LAST PAGE FOR EXPLODED VIEW AND HARDWARE LIST.





CLAY TARGET MACHINES

- 1) Remove existing nuts (part number hdw2020) from underneath the plastic spacers on the bottom side of the frame.



- 2) Place the larger of the two brackets (part number 120100582) on the bottom side where the nut was just removed. Fasten the bracket to the frame using hdw2020 that was removed in step 1. **NOTE: The larger mounting bracket must be placed on the SAME SIDE of the frame that the throwing plate extends out on.**





CLAY TARGET MACHINES

- 3) Place the smaller of the two mounting brackets (part number 120100583) on the opposite side of the frame under the plastic spacer using the same process described in step 2. **NOTE: The smaller of the two brackets must be placed on the OPPOSITE SIDE of the frame from the first mounting bracket.**



- 4) Next, place part number 120100584 on the inside of the small mounting bracket as shown below and use the following hardware numbers HDW2050 & HDW2020 to fasten the mounting bracket to the mating part.





CLAY TARGET MACHINES

5) Using the same process described in step 4, use the second of the two 120100584-part numbers and fasten it to the large mounting bracket using the following hardware numbers. HDW2050 & HDW2020



6) Next, we need to mount the front formed brackets (part numbers 120100585) to the parts that we just mounted in the previous steps. You will notice that the part you will be fastening has a slot design, this is for adjustability for the length of the arm guard. To be safe tighten the bracket with the slot pushed all the way forward as shown below. Be sure to leave the bolts slightly loose to allow for fine tuning after install is complete. Same hardware numbers used in this step as previous. HDW2050 & HDW2020.



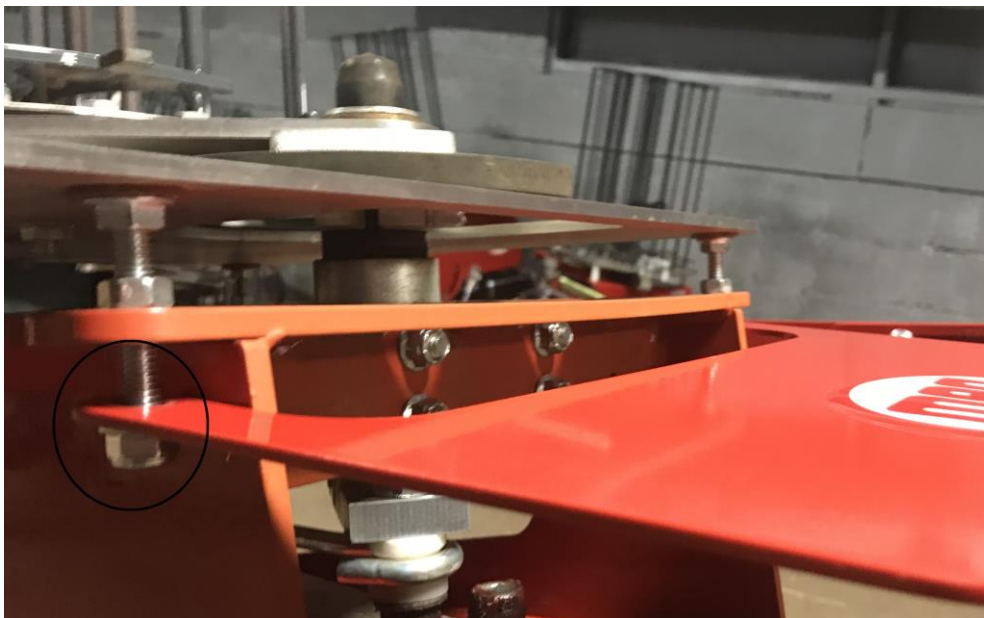


CLAY TARGET MACHINES

- 7) *In step 7 we will be doing the same thing as we did in step 6, just on the opposite side. Using hardware numbers HDW2050 & HDW2020 fasten the slotted end of the bracket to the square hole. **NOTE: Make sure that the slotted part is mounted on the inside of the part that has already been mounted previously.** Also, be sure to have the slotted bracket pushed all the way forward as shown below for safety purposes. We will be able to fine tune once the install is complete.*



- 8) *Next remove the two nuts under the throwing plate that mount to the frame as shown below. Then place part number **120100597** underneath the frame and tighten to frame using the two nuts we just removed.*





CLAY TARGET MACHINES

- 9) *Using three HDW2087's, attach the front support to the three mating slots on the front guard as shown below.*



- 10) *Lastly attach the front guard support using three HDW2020's to the HDW2087 as shown below.*





CLAY TARGET MACHINES

11) Last step would be to adjust the two front guard components as needed for safety. After that is complete, go around and assure all hardware is tightened properly.

See below for exploded view and hardware list

PARENT	PREC-
XXXXXXXX	A

ITEM NO.	PART NUMBER	DESCRIPTION	QTY.
1	120100582	GUARD BRACKET LH	1
2	120100583	GUARD MOUNT RH	1
3	120100584	GUARD REAR FORM LH	2
4	120100585	FRONT FORM BRKT	2
5	120100597	XP SERIES GUARD FRONT SUPPORT	1
6	120500097	MEC DOMED LABEL	1
7	HDW2020	5/16-18 HEX FLANGE LOCK NUT	7
8	HDW2050	5/16"-18 X 1.00 CARRIAGE BOLT	4
9	HDW2087	5/16-18X 1.0 CSSH	3

