



CLAY TARGET MACHINES

MOTOR COVER INSTALLATION

MEC P/N – 120000289/120000290

CAUTION: ANY MEC CLAY TARGET MACHINE MUST BE IN THE DISARMED STATE WITH THE BATTERY DISCONNECTED PRIOR TO MAKING ANY ADJUSTMENTS, LOADING THE CLAY TARGETS OR TRANSPORTATION OF MACHINE.

Step 1 – Remove the clamp block from the Gearbox shaft.

Step 2 – Apply a liberal amount of grease to the top of the Gearbox as shown below.



Step 3 – Slide the black washer provided over the shaft of the Gearbox.





CLAY TARGET MACHINES

Step 4 – Slide the nylon spacer over the shaft of the Gearbox. Retighten the clamp block.



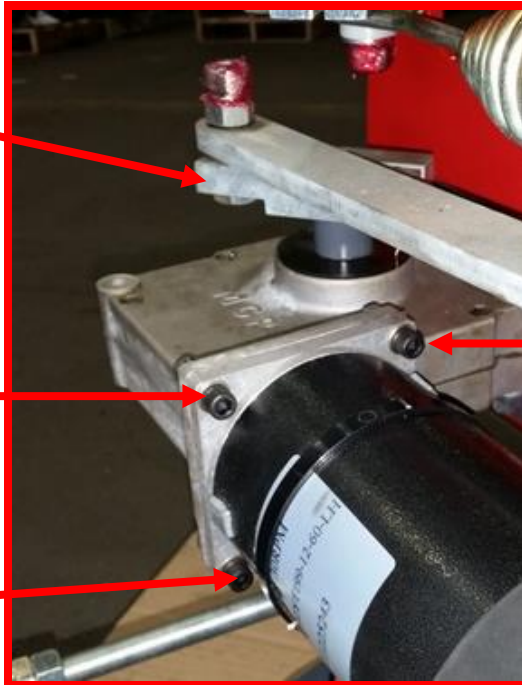
Step 5 – Remove the (3) M6 screws from the motor using an M5 allen wrench.

Step 6 – Insert the (3) longer M6 screws provided and retighten securely using an M5 allen wrench.

CLAMP BLOCK

REMOVE EXISTING BOLT
AND REPLACE WITH THE
M6 BOLT PROVIDED.

REMOVE EXISTING BOLT
AND REPLACE WITH THE
M6 BOLT PROVIDED.



REMOVE EXISTING BOLT
AND REPLACE WITH THE
M6 BOLT PROVIDED.

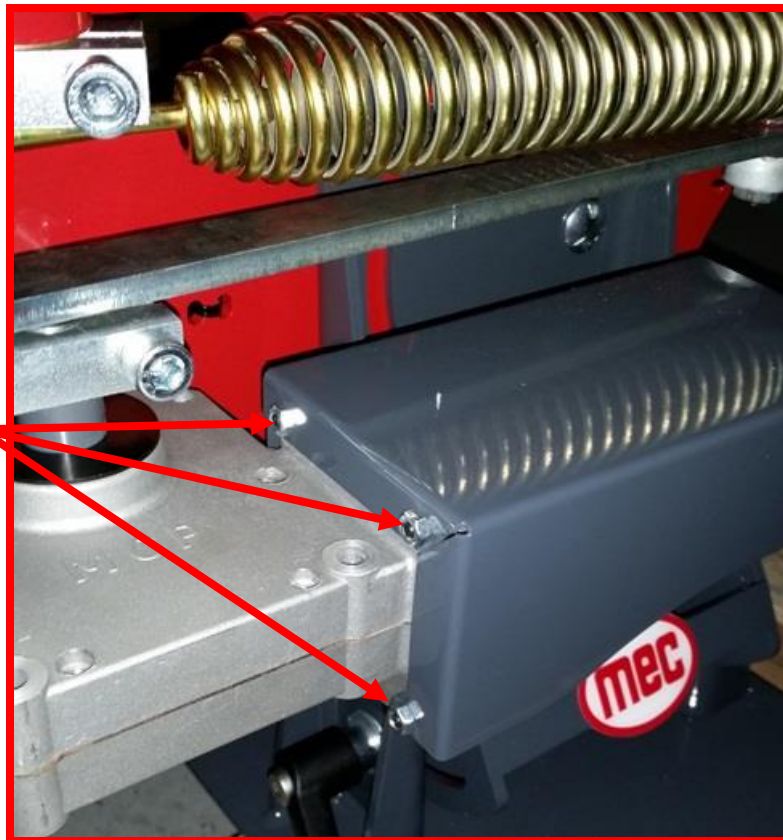


CLAY TARGET MACHINES

Step 7 – Slide the motor cover over the top of the motor and align the 3 holes in the motor cover over the M6 hardware.

Step 8 – Tighten the cover securely with the M6 nuts provided 10mm wrench.

SECURE WITH M6 NUT



For any questions regarding setup or use of any MEC Clay Target Machines, please give us a call or you can visit us on our website for video footage showing how setup and adjustments are made.

For a complete listing of spare parts for MEC and other brands of machines, and for pricing, be sure to check out our website.

MEC Clay Target Machines
800 Horicon Street, Suite 1
Mayville, WI 53050 USA
920-387-4500
1-800-676-0365

www.mecshootingsports.com