

MEC Powder Measure



SAFETY



Reloading can be a rewarding and satisfying hobby as long as these and other safety guidelines are followed. Safety should be practiced at all steps of the reloading process. Following these steps will reduce the chance of an accident or injury.

- Use only laboratory tested reloading data
- Always wear safety glasses when reloading
- Wear protective gloves and wash hands after
- Keep your reloading area clean and organized
- Do not mix powders or use unlabeled powders
- Keep powders in a safe place away from children
- Clean up any spilled powder and dispose of it properly
- Observe all warnings on the use of maximum listed loads
- Follow all manufacturers' recommended operating procedures
- The MEC powder measure is not to be used for 'black powder'
- All unused powder should be returned to original storage container
- Follow your reloading manuals guidelines for reloading powder charges
- Keep all powder away from heat, flames, dampness, and electrical charges
- Do not smoke, drink or use medications that could impair your ability to pay attention while reloading. Pay close attention to your work when reloading.
- Use only powder that is labeled correctly and follow the powder manufactures' recommendations for proper use and safe storage.

RELOADING NOTES

- Keep notes on all reloading data where the components of reloading are not in the original packaging. All ammo should be label and described to allow any user to read and determine what is in the reloading ammo.
- Reloaded ammo should be noted with:
 - Names of Case, Primer, Powder, and Bullet Manufactures
 - Powder type and charge in grains
 - Bullet type and grain weight
 - COAL (case of all length) and/or trim length of the brass
 - Other relevant info that describes ammo and components.

POWDER MEASURE OPERATION

The powder measure will safely meter out the desired amount of powder while lifting the red handle from its starting position (**see Fig. 1**) to its highest position (**see fig. 2**) and returning it back to the starting position (**see Fig. 1**).

Every powder type will measure differently. For example, ball powder will measure smoothly where as a stick powder will be more difficult. Before charging cases, settle the powder in the bottle (#11 in Fig. 3). Also, load and check the weight of at least ten (10) charges before reloading a large quantity. This will help assure you that the correct powder charge is being loaded. In addition, some powders will need to be finished with a powder trickler to achieve the desired amount. MEC recommends the MEC Powder Trickler (P/N 1311088)

Note: Number (“#”) designations refer to parts shown on Fig. 3 at the end

Instructions:

1. Place powder measure base-stand (#4-#6) on a flat and level surface for stability
2. Screw bottle (#11) into powder base-stand (#4-#6) and hand tighten to a snug fit.
3. Ensure that powder measure handle (#3) is in the starting position (Fig. 1)
4. Use a funnel to carefully fill powder bottle (#11) with your determined cartridge powder.
5. Set powder amount by unlocking jam nut (#9) and turning powder measure screw (#2) clockwise or counter-clockwise to either decrease or increase charge amount.
6. Place a powder pan directly under powder sleeve (#5) to capture powder charge.
Note: Some powders can be dispensed directly into a cartridge case, but care should be taken to verify a safe amount of powder charge in being used.
7. Lift red handle to the highest position (Fig. 2) and lightly tap it at end of up stroke.
8. Lower red handle to starting position (Fig. 1) and lightly tap to help settle powder.
9. Measure charge amount on scale to ensure correct and recommended charge.
10. Repeat steps 4 through 9 until the powder measure is metering out correct charge.
11. Cycle through at least 10 charges to ensure you are getting a consistent charge.
12. Once final setting is determined and verified, ensure jam nut (#9) is fully tightened.

Recommendations:

- Maintain a powder level of at least 1/4 bottle for maintaining consistent charges.
- Keep the powder drop dry and clean to avoid powder sticking to the moving parts.
- Do not leave powder in powder measure when finished reloading. Empty measure by loosening jam nut (#9) and turning measure screw (#2) out to max charge. Then place a receiving receptacle under powder sleeve (#5) and cycle handle (#3) to highest and starting position to empty powder powder measure contents of powder. Lastly, carefully pour unused powder back into original manufacturer’s container.

Disassembly:

1. Pull the pin (#8) out of the pivot (#1)
2. Pull screw (#2) and jam nut (item 9) with volume controller (#7) out of pivot (#1).
3. Remove pivot (#1) from the powder measure base (#6)

Re-Assembly:

1. Reinsert pivot (#1) into the powder measure base (#6)
2. Install screw (#2) and jam nut (item 9) with volume controller (#7) into pivot (#1).
3. Reinsert the pin (#8) into the pivot (#1)

Note: Handle (#3) may be placed on either right or left side by removing pivot (#10) and then reinstalling from the opposite side of measure.



LIMITED LIFETIME WARRANTY

Reloading Press, Powder Trickler, and Powder Measure

Your MEC reloading press, powder trickler, powder measure and other MEC metallic reloading products have been produced under rigid standards of manufacture. These products are warranted to be free from defects in material or workmanship for as long as the original owner owns it. This warranty is extended only to original consumer purchaser and excludes any electrical components or products as well as any case preparation products. All MEC metallic reloading products are intended for non-commercial use by hobbyists. Any other use of these products will void the warranty.

In the event that your MEC reloading product is found to be defective in material or workmanship, MEC will repair or replace it (at MEC's option) at no charge. Should you believe that your MEC reloading product is defective in material or workmanship, please return it postage or freight prepaid along with dated proof of purchase, product information and reason for return to the below address. Also be sure certain your product is properly packaged to protect it from possible damage in transit.

Mayville Engineering Company
Reloader Division – Warranty
715 South Street
Mayville, WI 53050

Warranty services cannot be provided without meeting the above requirements.

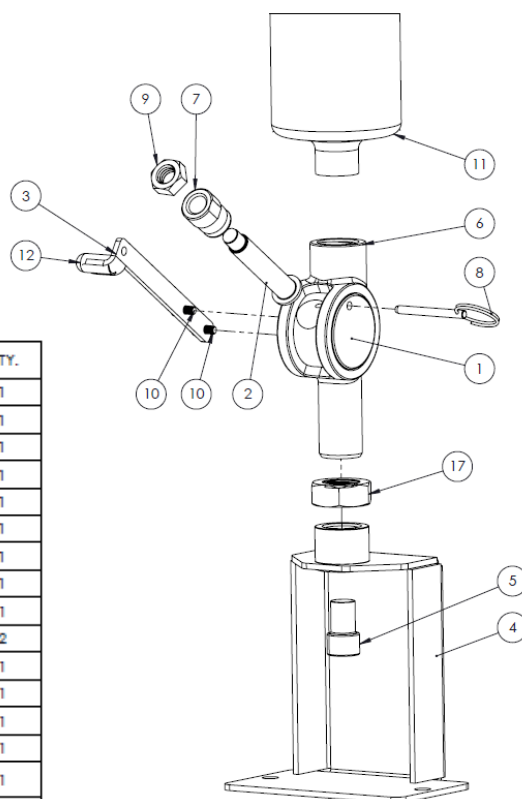
THIS LIMITED LIFETIME WARRANTY DOES NOT COVER DEFECTS OR DAMAGE RESULTING FROM: CARELESSNESS, MISUSE, COMMERCIAL USE, ABUSE, IMPROPER INSTALLATION, MODIFICATION, OR NORMAL WEAR AND TEAR. THIS LIMITED LIFETIME WARRANTY IS IN LIEU OF ALL OTHER WARRANTIES, EXPRESSED OR IMPLIED, INCLUDING WITHOUT LIMITATION OF MERCHANTABILITY AND FITNESS FOR A PARTICULAR USE.

LIMITATION OF LIABILITY

MEC IS NOT LIABLE FOR DAMAGES IN EXCESS OF THE PURCHASE PRICE OF THE PRODUCT AND UNDER NO CIRCUMSTANCES SHALL MEC BE LIABLE FOR CONSEQUENTIAL OR INCIDENTAL DAMAGES. HOWEVER, SOME STATES DO NOT ALLOW LIMITATIONS ON CONSEQUENTIAL OR INCIDENTAL DAMAGES, SO ABOVE LIMITATION OR EXCLUSION MAY NOT APPLY TO YOU.

POWDER MEASURE EXPLODED VIEW

Fig. 3



ITEM NO.	PART NUMBER	DESCRIPTION	QTY.
1	1311033	POWDER PIVOT	1
2	1311035	POWDER MEASURE SCREW	1
3	1311047	HANDLE, POWDER	1
4	1311050	STAND, POWDER	1
5	1311054	POWDER SLEEVE	1
6	1311070	POWDER MEASURE BASE	1
7	1311081	VOLUME CONTROLLER	1
8	1311087	POWDER PIN	1
9	HDW459A	1/2-20 JAM NUT	1
10	HDW507A	10-32 X .375 CS GR.8	2
11	1008042UPC	MAGNUM SHOT CONTAINER	1
12	1008687	RUBBER HANDLE	1
13	1311140	POWDER MEASURE INSERT / PK	1
14	1311141	POWDER MEASURE OUTER / PK	1
15	1311152	INSTRUCTION SHEET POWDER MEASURE	1
16	1311148	POWDER MEASURE HDW KIT	1
17	HDW2144	7/8-14 NUT, BLACK OXIDE	1