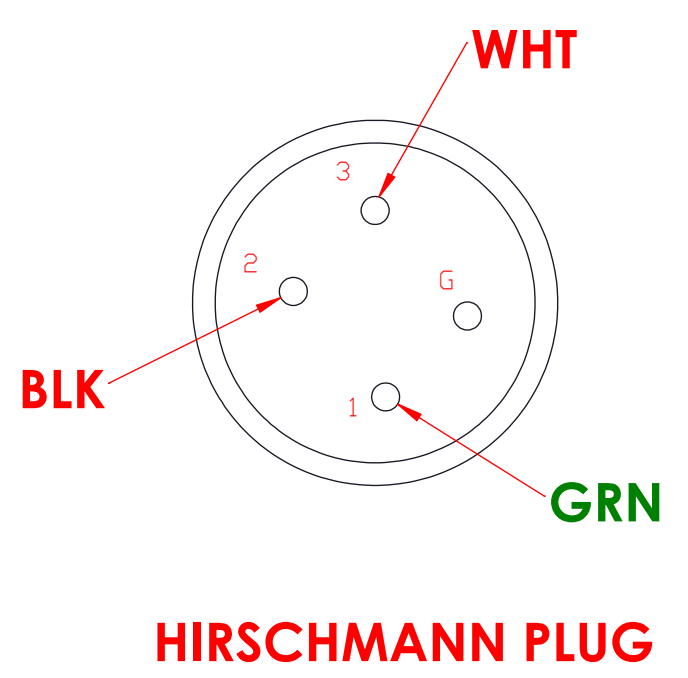
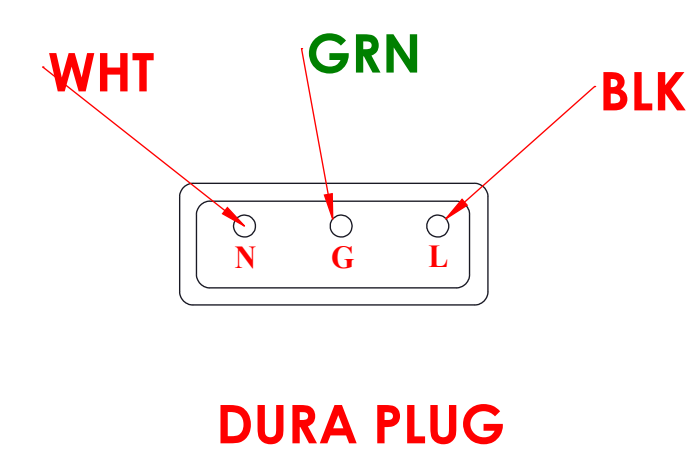
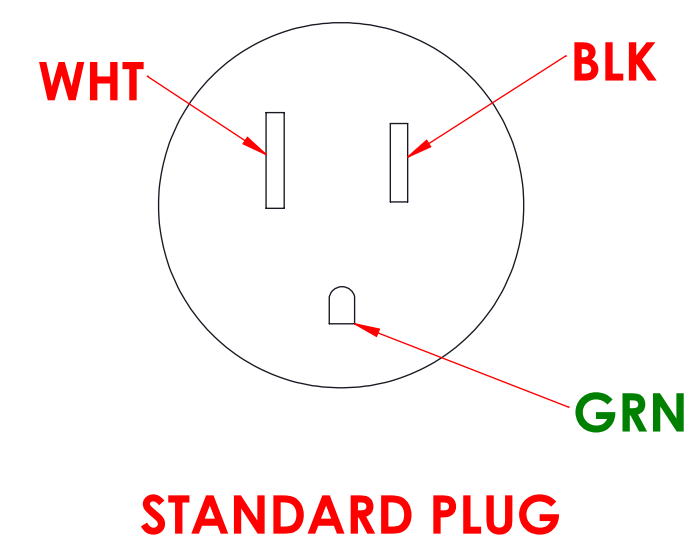
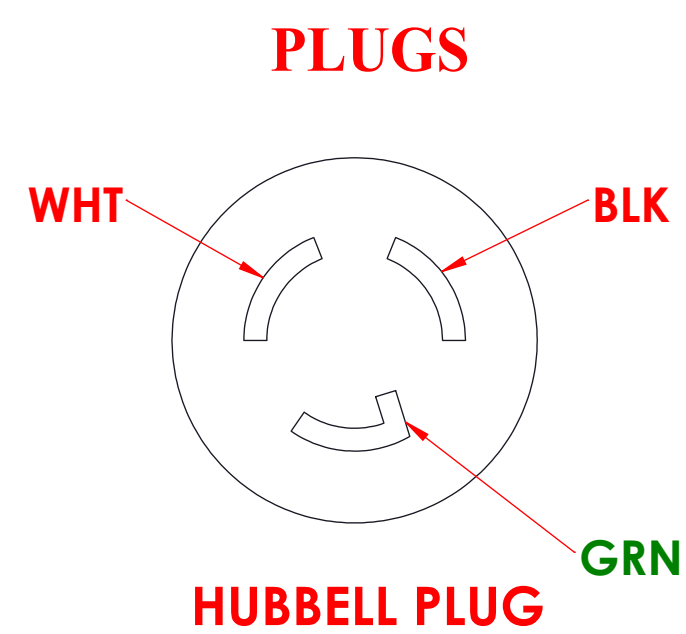
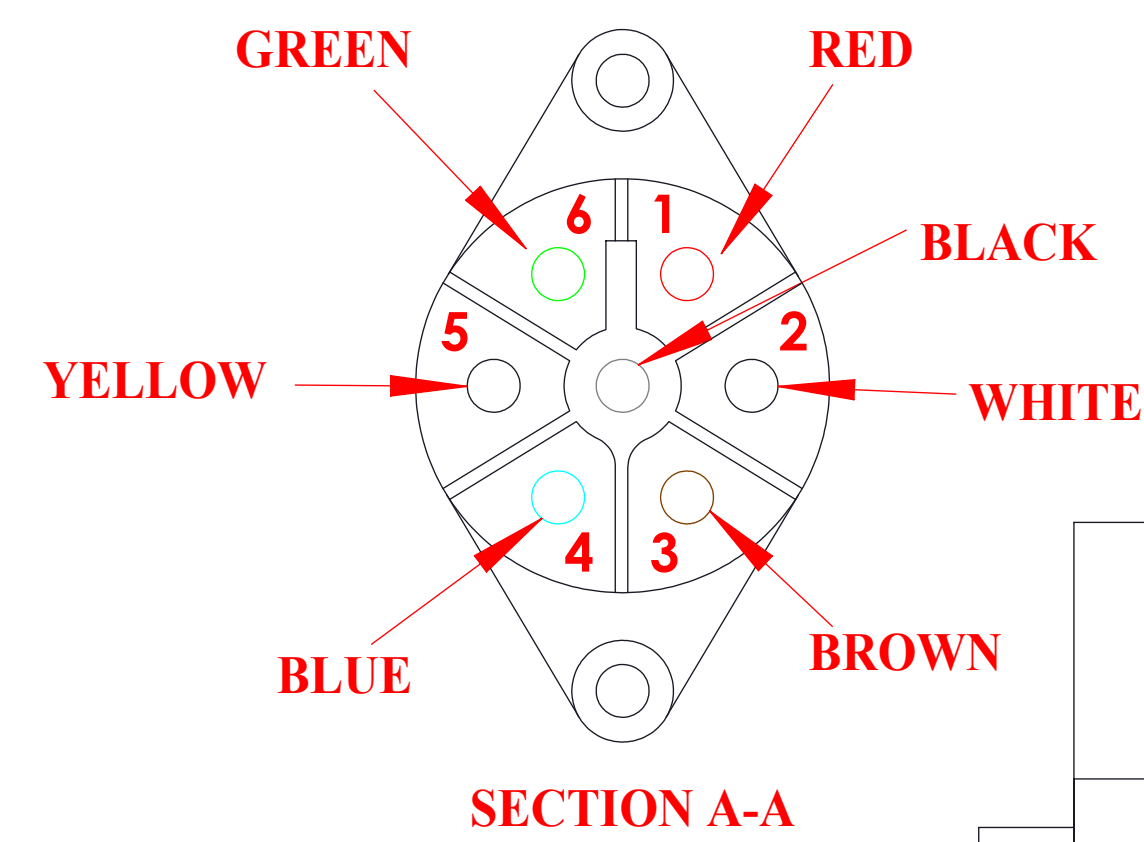
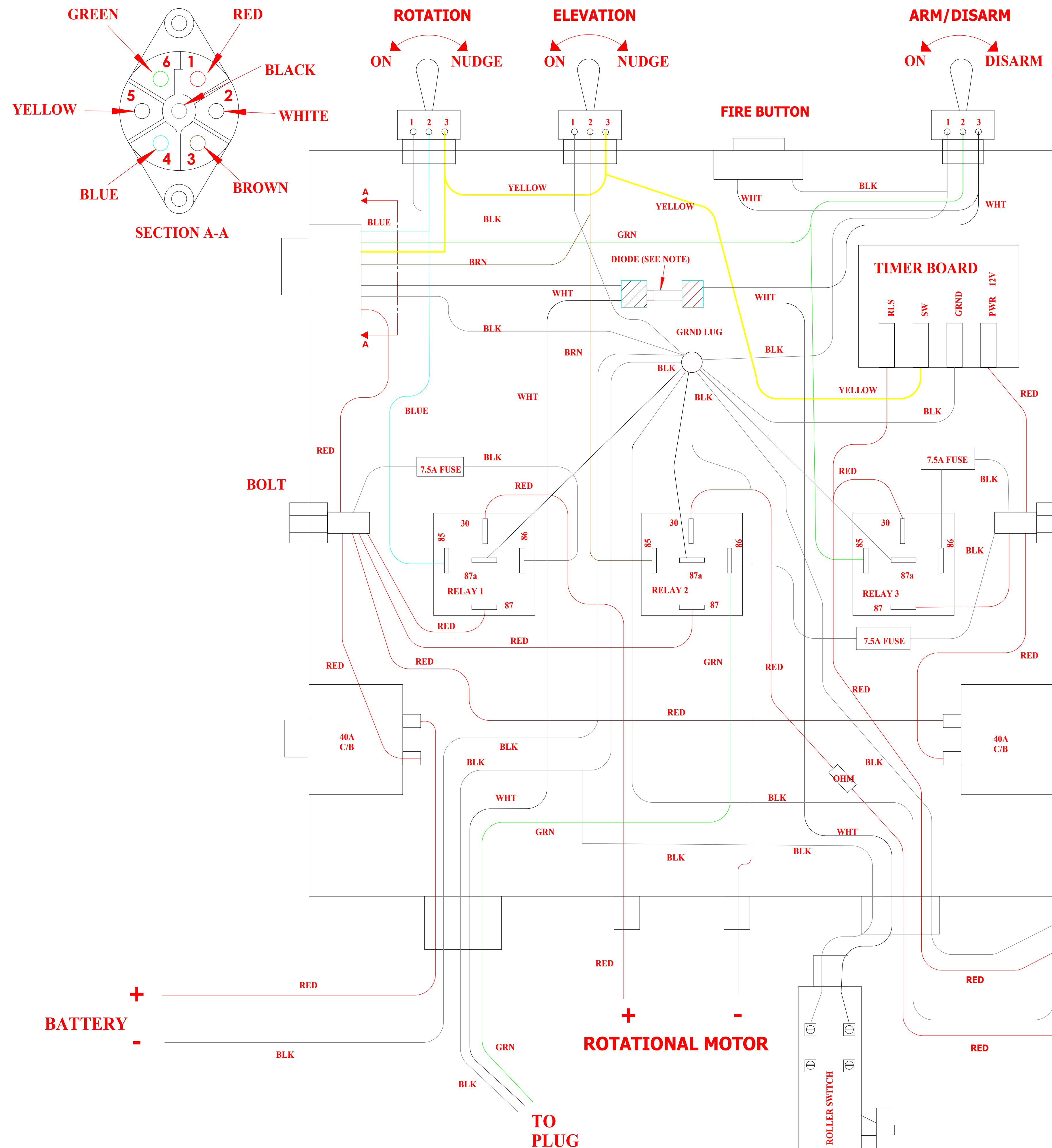


# 100E WOBBLE WIRING SCHEMATICS 120000382

<small>PDF CONFIDENTIAL PROPERTY OF MAYVILLE ENGINEERING CO. DO NOT DUPLICATE WITHOUT WRITTEN AUTHORIZATION</small>	
CUST REV:	A
DRW REV:	0
DRW NO:	DM180761
DATE:	03-24-17
MEC P/N:	120000382
<small>CHANGE DESCRIPTION--APPROVED</small>	
RELEASED -- JDS	



- NOTES**
1. GRAY END OF DIODE MUST BE POSITIONED TOWARDS THE LEFT SIDE OF THE BOX CONNECTING THE WHITE PLUG WIRE.
  2. SECTION A-A IS THE PLUG THAT WILL ALLOW YOU TO CONTROL THE TRAP REMOTELY.