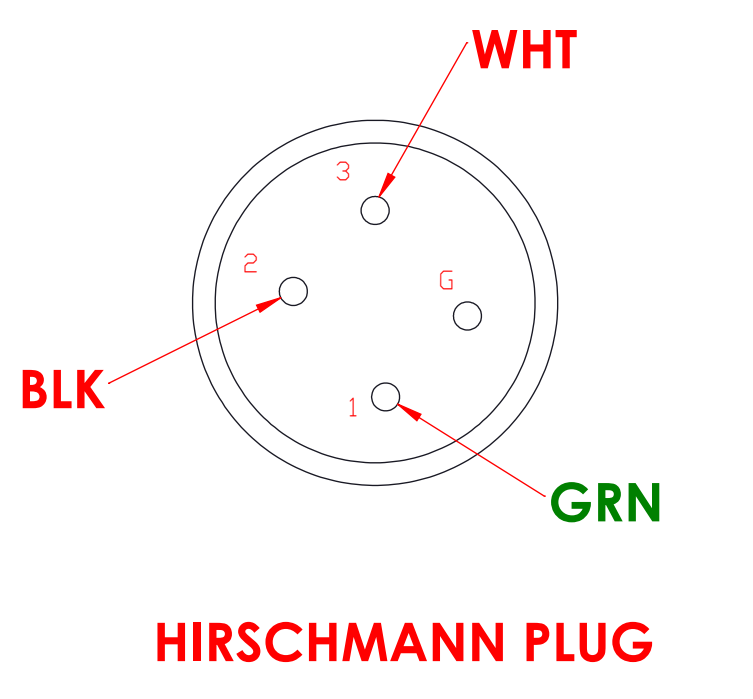
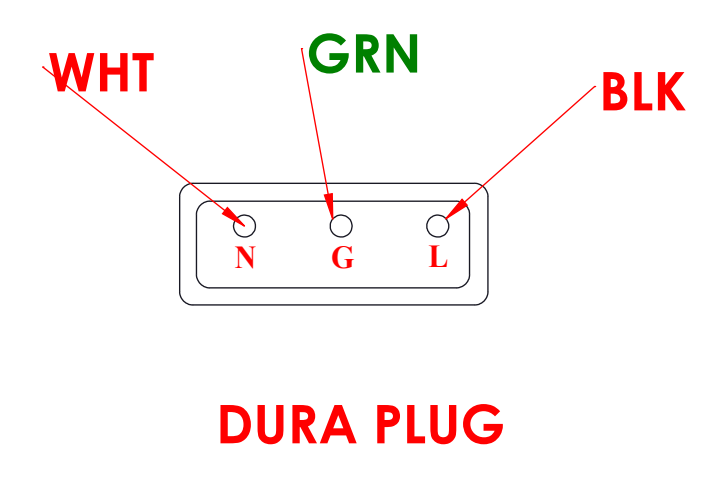
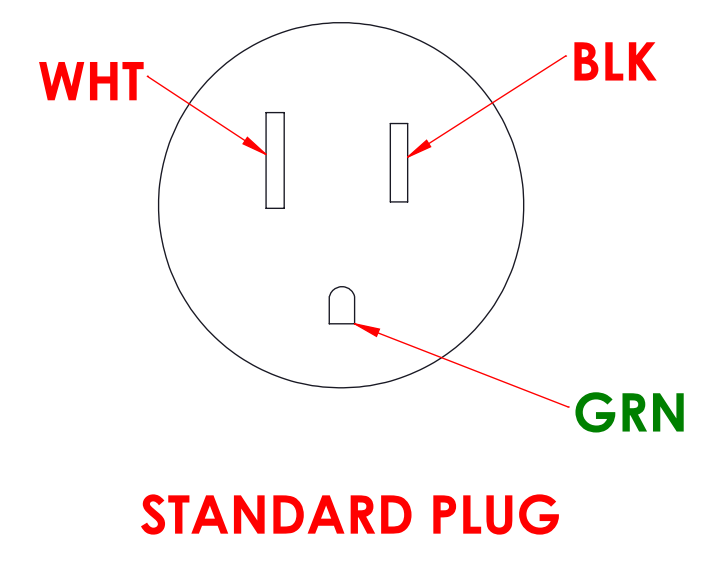
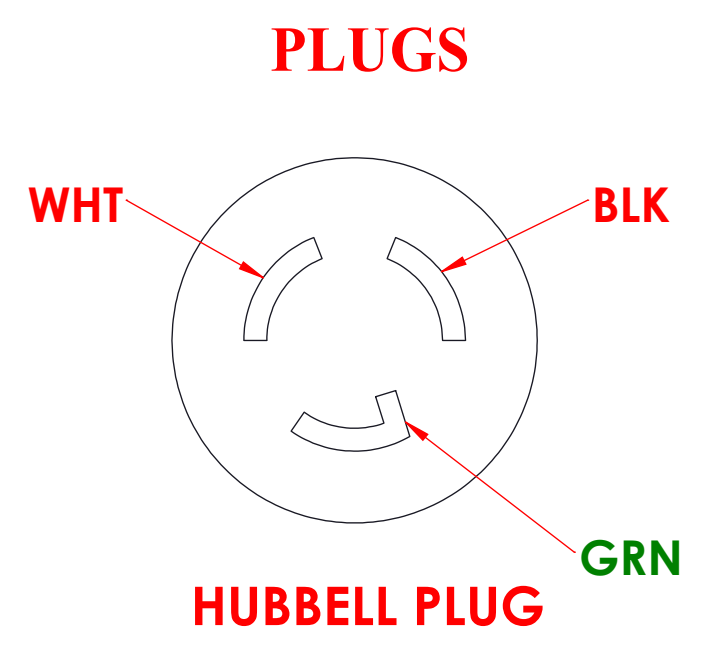
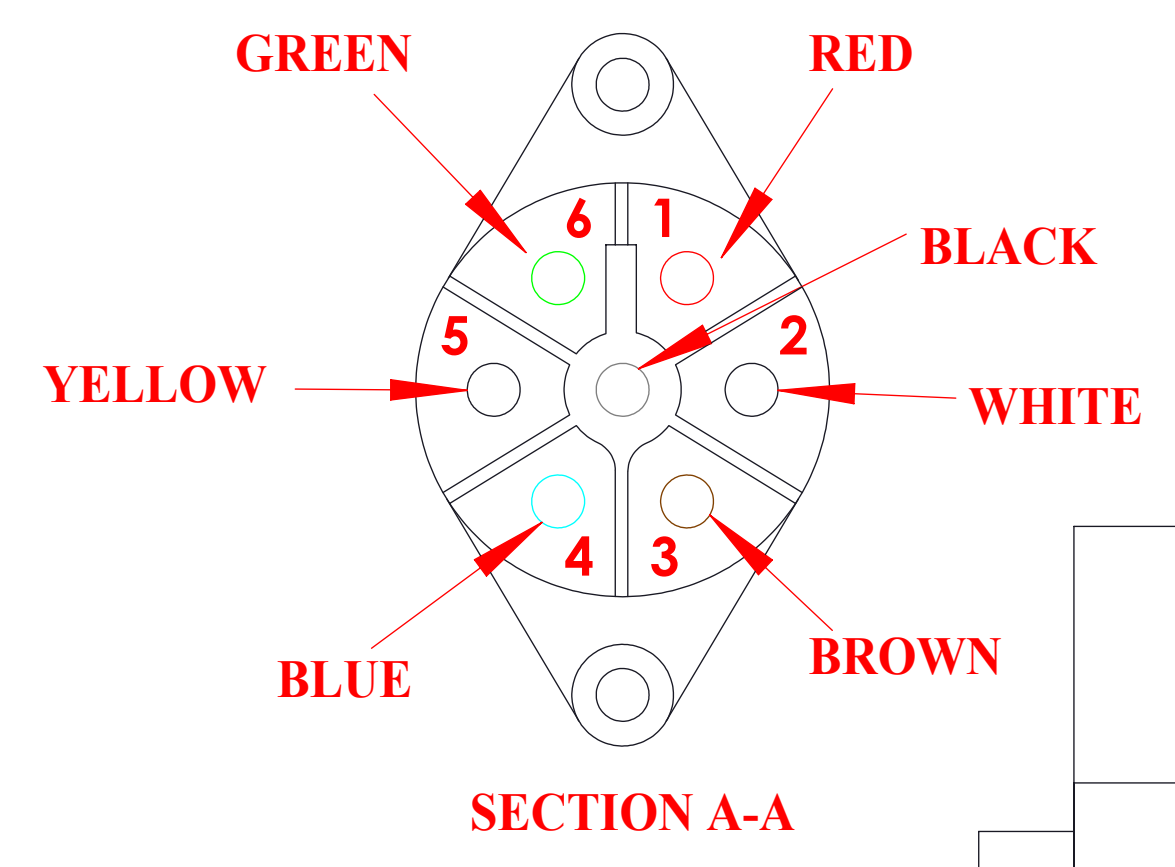
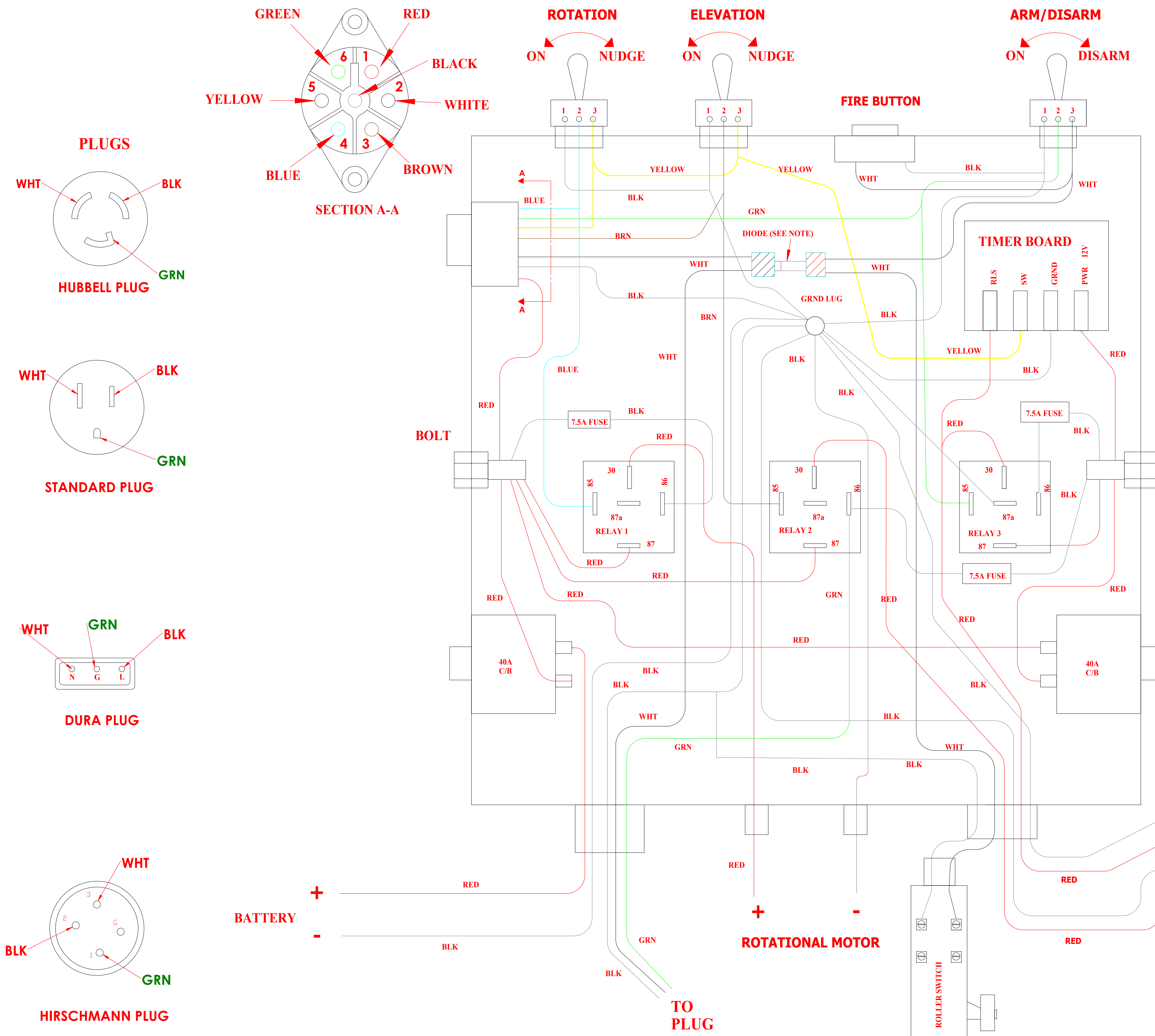


WOBBLE WIRING SCHEMATICS 120000034



PDF CONFIDENTIAL PROPERTY OF MAYVILLE ENGINEERING CO. DO NOT DUPLICATE WITHOUT WRITTEN AUTHORIZATION	
CUST. REV:	A
DRW. REV:	1
DRW. NO:	DM164673
DATE:	03-24-17
MEC. P/N:	120000034
CHANGE DESCRIPTION—APPROVED	
UPDATED YELLOW WIRE - JDS	

- NOTES**
1. GRAY END OF DIODE MUST BE POSITIONED TOWARDS THE LEFT SIDE OF THE BOX CONNECTING THE WHITE PLUG WIRE.
 2. SECTION A-A IS THE PLUG THAT WILL ALLOW YOU TO CONTROL THE TRAP REMOTELY.